

Annual Report: 2016

Presented to the Board of County
Commissioners of Douglas County

February 1, 2017

- DOUGLAS COUNTY -

FOOD POLICY COUNCIL



<http://douglascountyks.org/fpc>

THE DOUGLAS COUNTY FOOD POLICY COUNCIL

- ✓ Established by the County Commission in 2010
- ✓ Convened as a joint City-County Council in 2013
- ✓ Identifies the benefits, challenges and opportunities for a successful food system
- ✓ Recommends local policies to support food system
- ✓ Represents a wide range of stakeholders in food system

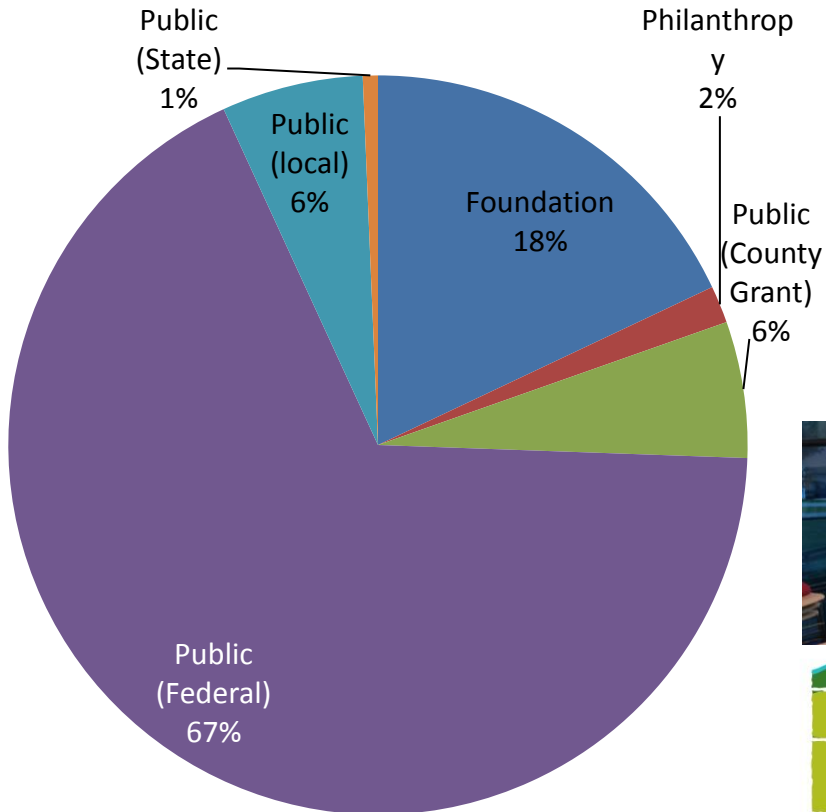


APPOINTEED MEMBERS

Food System Sector:	Representing:
At-Large: Appointed by Michelle Derusseau	TBD
At-Large: Appointed by Mike Gaughan	Haskell University
At-Large: Appointed by Nancy Thellman	KC Healthy Kids
Agricultural Producer	Vesecky Family Farms
Agricultural Producer	Douglas County Farm Bureau
Agricultural Producer	Moon on the Meadow Farm
Retail Food Outlet	Merchants Pub and Plate
Institutional Food Purchaser	Lawrence Memorial Hospital
Education	KU Center for Sustainability
Extension Service	Douglas County Extension
NGO- Health/Nutrition/MD	KU Dining Services (PENDING)
NGO- Local Food Systems/Sustainable Ag.	The Kansas Rural Center
Youth Representative	TBD
Senior Food & Nutrition Programs	Douglas County Senior Services
At-Large (appointed by City)	Sunflower Foundation
At-Large (appointed by City)	Lawrence Douglas County Health Dept.
Agricultural Producer	Pendleton's
Retail Food Outlet	The Merc Co+op
Retail Food Outlet	Hy-Vee
City of Lawrence Sustainability Advisory Board	City of Lawrence
Food Security	Just Food
Established Farmer's Market in Douglas County	Downtown Lawrence Farmers Mkt
Business Community	Lawrence Chamber of Commerce

MAJOR ACCOMPLISHMENTS

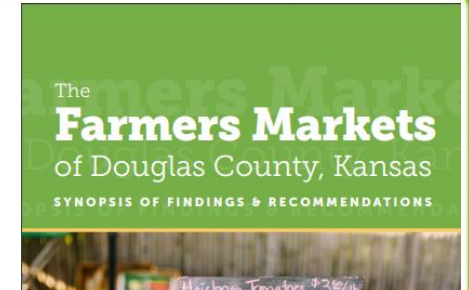
Total raised to date:
\$1,137,657



**DOUBLE UP
FOOD BUCKS™**



commonground
COMMUNITY GARDEN



**DOUGLAS COUNTY
FOOD
SYSTEM
PLAN**



**SUNRISE
PROJECT**

COMMON GROUND PROGRAM

- ✓ Utilizes vacant, under-utilized city owned properties.
- ✓ FREE lease to community gardeners, market farmers.
- ✓ WIN-WIN for gardeners and farmers who need land and City staff tired of mowing vacant lots.

Community Partners

- Penn House
- Kaw Valley Seed Fair
- Lawrence Public Library
- Douglas County Community Foundation
- Growing Food, Growing Health (The Merc)
- GreenWish Lawrence
- ECM - KU
- KU Big Event
- Summer of Service
- KU Hillel
- Just Food
- Ballard Center
- Sunrise Project
- KU Super Service Saturday
- KU Sustainability Certificate Interns
- Cub Scouts



www.lawrenceks.org/common_ground

2016: COMMON GROUND PROGRAM

Number of gardens/farms: **10**

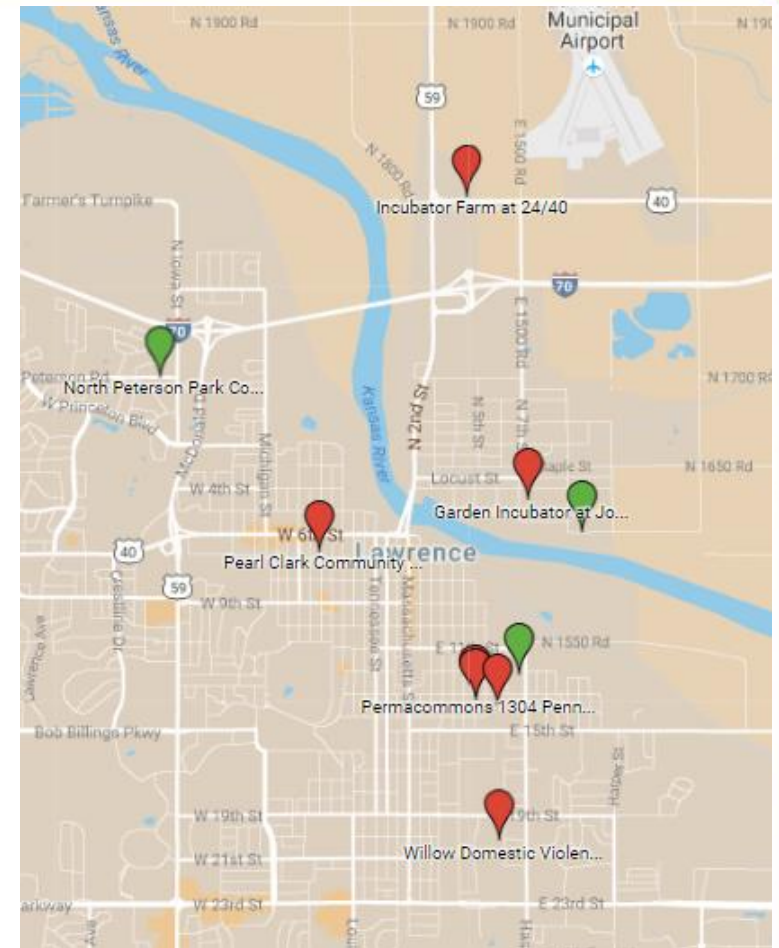
Number of gardeners/farmers: **203**

Number of community events and classes: **53**

Number of participants in events: **965**

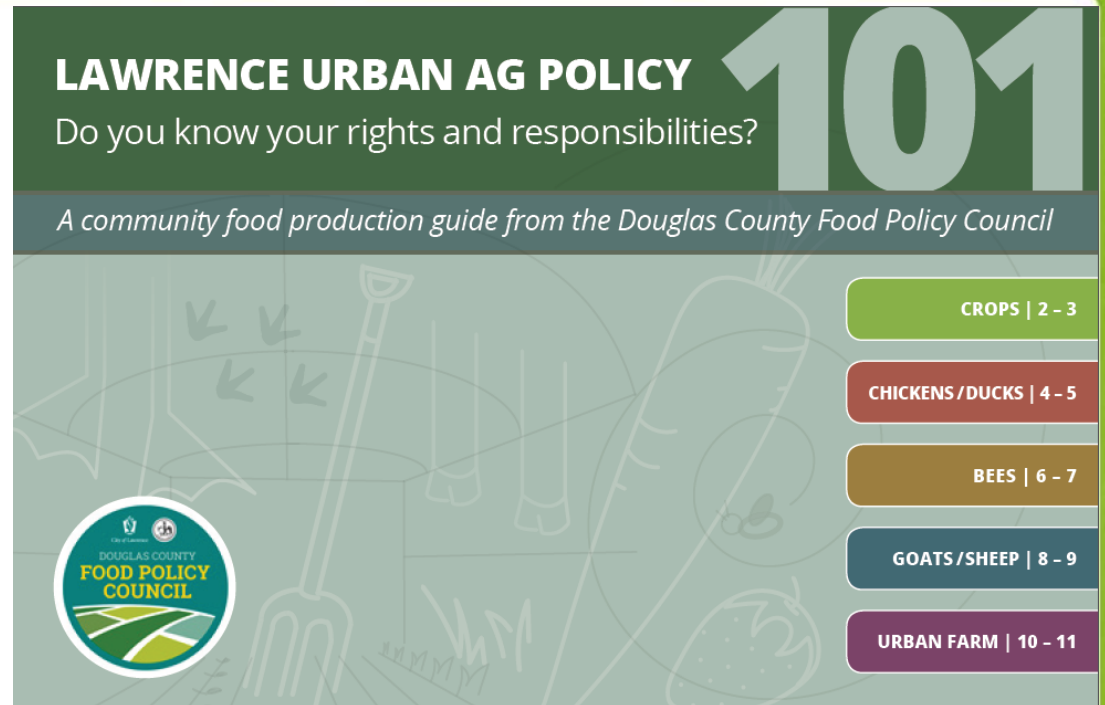
Market value of produce sold: **\$64,200**

Pounds of produce donated: **1,350**



URBAN AGRICULTURE

- ✓ Significant engagement with Planning Department and Planning Commission
- ✓ Helped lead public input through policy development
- ✓ Series of public events planned for spring 2017
- ✓ Presentation and at KS-American Planning Association conference and Kansas FPC convening

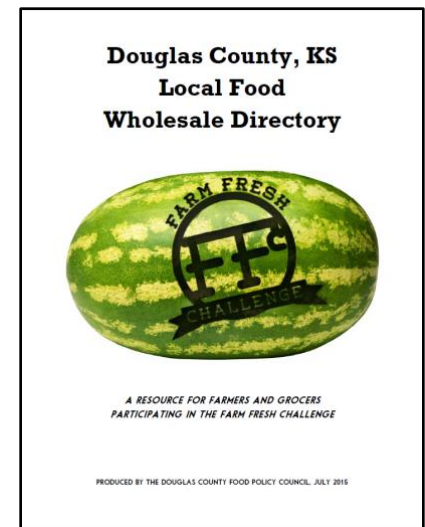


FPC worked with community designers to create user-friendly publications to explain changes in new city code.

➤ www.lawrenceks.org/urban-ag to launch soon.

PARTNERSHIP TO IMPROVE COMMUNITY HEALTH

\$1.3 million CDC grant for LDC Health Department: Grant period September 2014-2017 (subcontract to County)



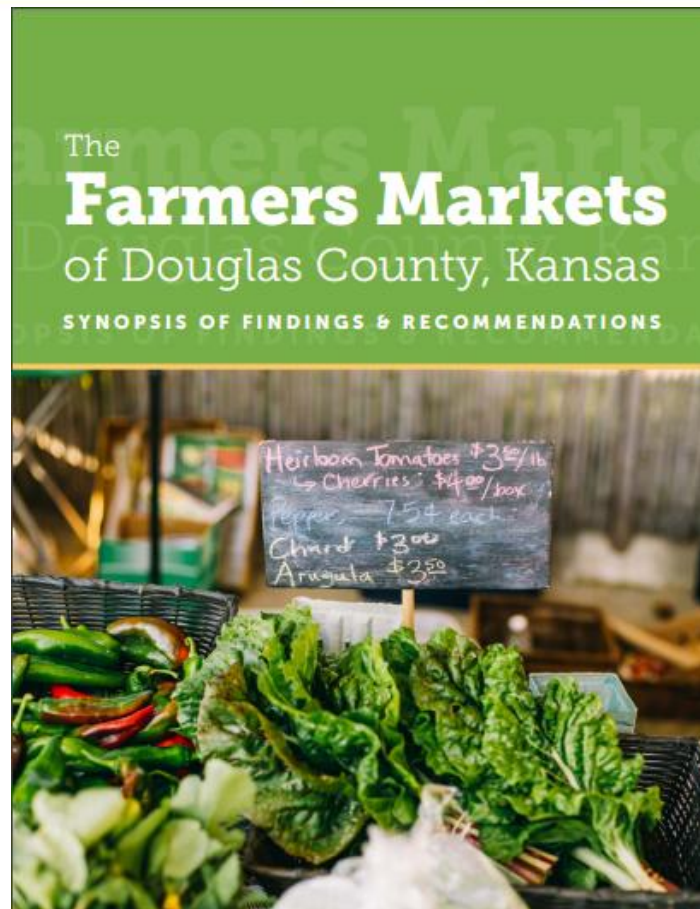
- USD497 launched Request for Information process and procurement guidelines to
- Collaborations with Eudora and Baldwin City, including USDA grant application

Established subcontract with Sunrise Project to lead extensive food system training with Community Coordinators, support community engagement.

Update coming February 2017! Expanding to include schools, restaurants, and recovery groups.

USDA FARMERS' MARKET PROMOTION PROGRAM GRANT

- ✓ Received \$53,650 in funding to conduct in-depth analysis of our county's six farmers' markets and consumer interests
 - SCALE, Inc. recommendations for sector, markets in new reports
- ✓ 2017: TA support to help with market implementation
 - Collaboration and new marketing tactics to increase shoppers and vendor viability



Reports available at: <https://www.douglascountyks.org/fpc/reports-and-resources>

STATEWIDE LEADERSHIP

- ✓ Statewide councils expanding
- ✓ K-State College of Ag & KSRE Annual Report highlights DCFPC and regional food hub

➤ Video: <https://youtu.be/1bU-i94luN0>

- ✓ DCFPC Chair and staff invited to present to **KS Local Food & Farm Taskforce**

- ✓ Presented at:

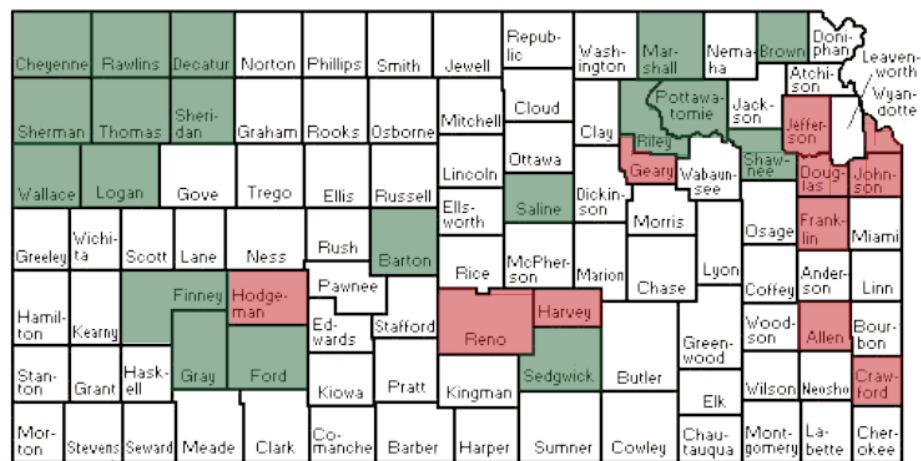
- K-State Olathe Urban Food Systems Symposium
- KRC Farm and Food Conference

- ✓ Governor's Summit on Ag Growth

“For the most part, farmers are really good at retail and direct sales, and we are kind of good at what I call the ‘easy wholesale’ — such as chefs and grocery stores. But there is a whole new, larger world that farmers have not even begun to tap into.”

- Jill Elmers (farmer, DCFPC) in KSU Report

<http://www.bookstore.ksre.ksu.edu/pubs/UNN31.pdf>



■ Current Councils
■ Emerging Councils

Kansas Alliance for Wellness

2016 MARKET MATCH TRANSITION TO DOUBLE UP FOOD BUCKS

2016 USDA FINI Grant

Double Up Heartland Collaborative

Kansas/Missouri Regional Partnership

to increase SNAP matching

68 farmers markets

117 grocery stores

316,000 SNAP users

\$2.9 million in USDA funding

\$2.9 million in local support

= \$5.8 million over 3 years



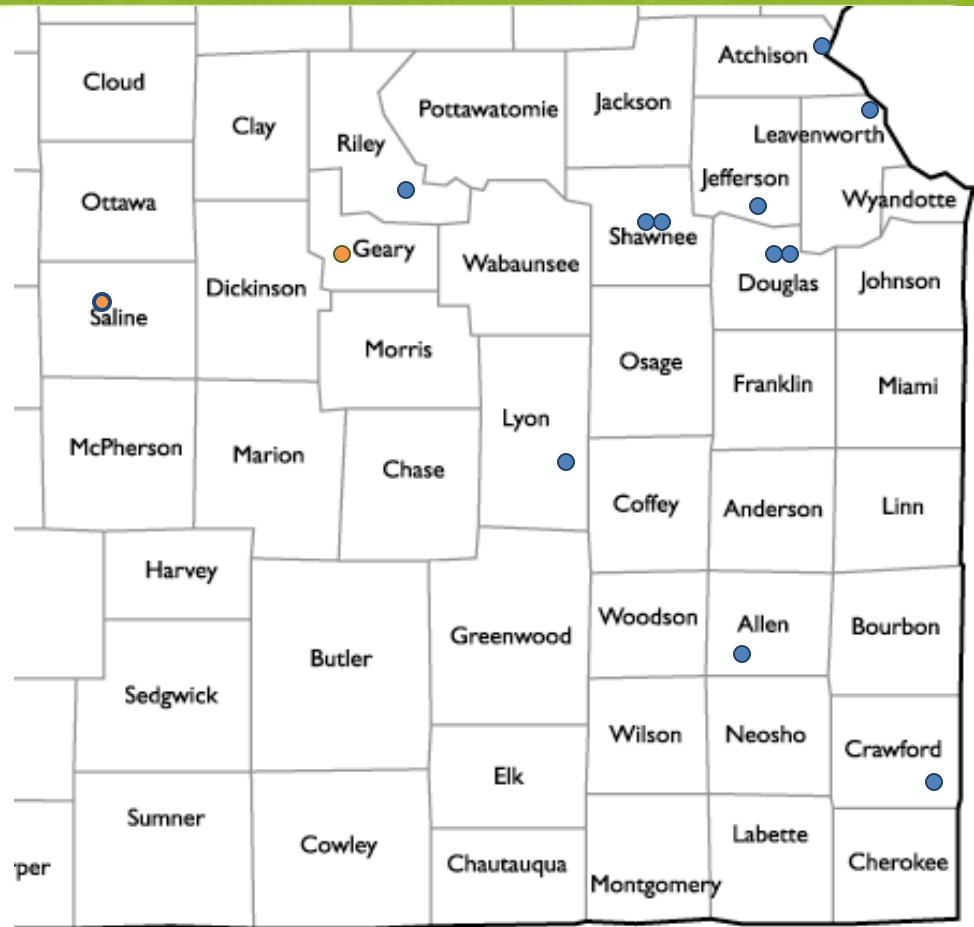
**DOUBLE UP
FOOD BUCKS™**



2016 DOUBLE UP FOOD BUCKS

Currently at **12** Markets
 Expanding to **15** Markets
 and **2** Rural Grocery Stores

	2015	2016
SNAP Distributed	\$19,551	\$25,529
Match	\$20,727	\$25,152
Cumulative Impact	\$40,277	\$50,681
Economic Impact	\$54,777	\$68,926



SNAP matching is a win-win-win!



low-income families can purchase and eat more healthy foods,

100% say DUFEB helped them afford more FF&V
87% consumed more FF&V
67% decreased consumption of junk food



local farmers access new customers and new sources of revenue,

Vendors saw an increase of over \$50,000 in revenue across all markets because of SNAP matching



and more dollars stay in **local Kansas communities.**

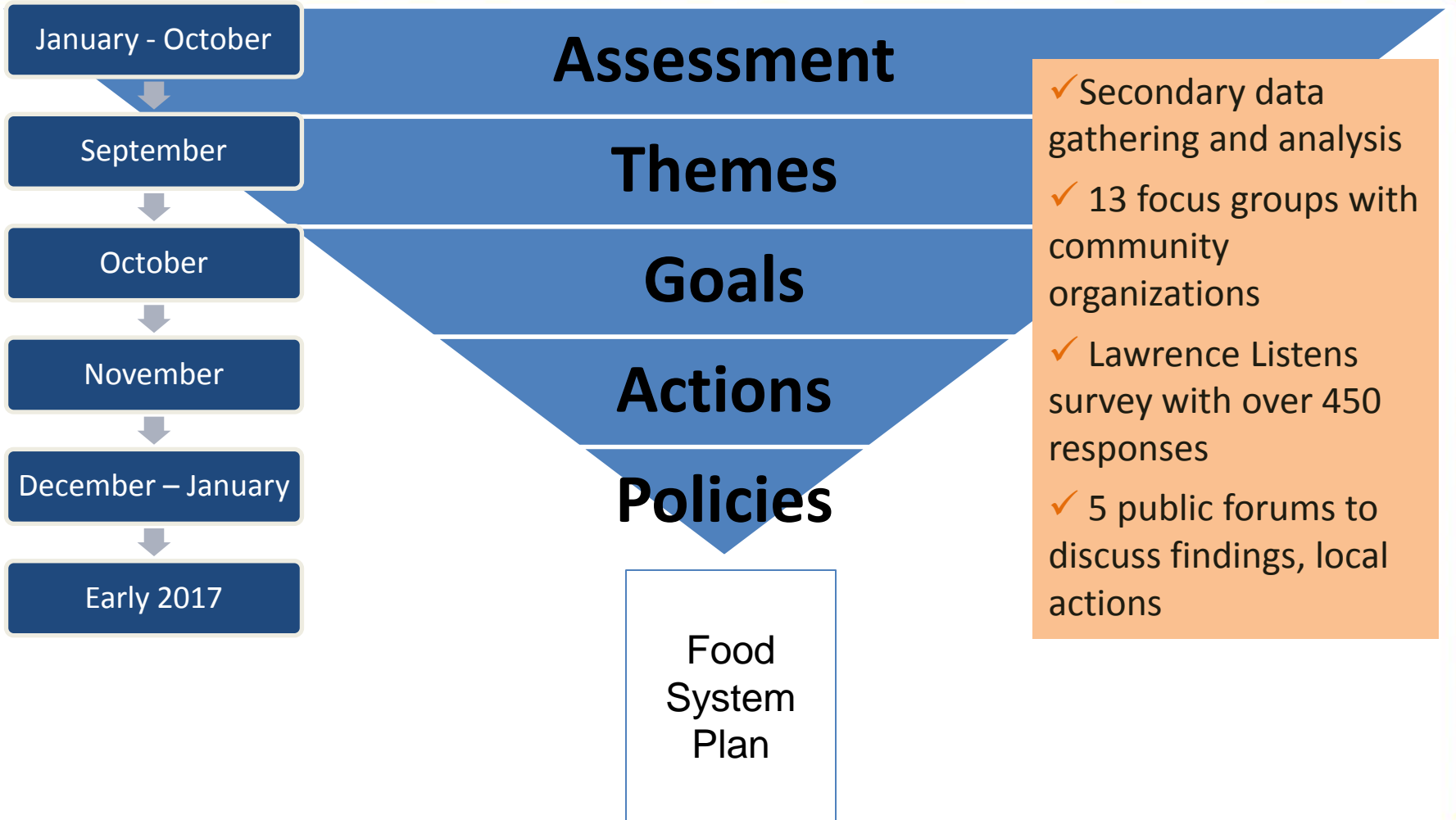
Every \$1 spent at a farmers market can generate up to \$2.80 for the local economy.

FPC TASKED TO WRITE FOOD PLAN

“a strategic plan should be developed by and maintained with the Local Food Policy Council to...ensure the master plan is fitting the true needs of the community.” --Comprehensive Plan Update Steering Committee



CREATING A FOOD SYSTEM PLAN



FOOD SYSTEM PLAN GOALS

1. **Agricultural producers, food entrepreneurs, and food sector workers thrive in our regional economy.**
2. **As our cities grow we prioritize natural resource conservation and maintain working lands to promote soil health.**
3. **We build and design our communities to ensure food access, foster health, and eliminate food deserts.**
4. **Our community works together to ensure affordable and culturally-appropriate food for all.**
5. **Our community minimizes waste creation and recovers, recycles, diverts, and composts to eliminate waste in our local food system.**

2017 OUTLOOK

- ✓ Food System Plan
 - February: Public comment
 - Spring: Adoption process
 - After adoption: Determine priorities, begin implementation
- ✓ Double Up Food Bucks growth
- ✓ Food Systems Coordinator transitions to Sustainability Planner
- ✓ Continue to tell our story and lead local food system innovation



Dan Fuller of White Tail Run Winery



John Wohletz of Wohletz Farm Fresh

STAY CONNECTED

- ✓ All Douglas County Food Policy Council meetings are open to the public—and our County Commissioners:
 - Full Council: Third Monday each month, 6:30pm to 8:30pm
Location varies throughout our county food system
 - Subcommittees meet monthly
- ✓ Agendas, minutes, reports, and additional info online:
<https://www.douglascountyks.org/fpc/welcome>
- ✓ Subscribe for monthly agenda announcements:
<http://lawrenceks.org/subscriptions>

QUESTIONS?

Helen Schnoes, Food Systems Coordinator
hschnoes@douglas-county.com
785-832-5157

<http://douglascountyks.org/fpc>