

SLT PUBLIC MEETING



SLT South Lawrence Trafficway

Project No. 10-23 KA-3634-03 | June 2022

IMPROVEMENTS TO THE SLT

The South Lawrence Trafficway is a vital corridor for the local community and commuters. The Kansas Department of Transportation (KDOT) and the Federal Highway Administration (FHWA) worked with the public's feedback to develop an alternative to previously proposed concepts. In addition, KDOT and FHWA have completed the Supplemental Environmental Impact Statement (SEIS) and Record of Decision.

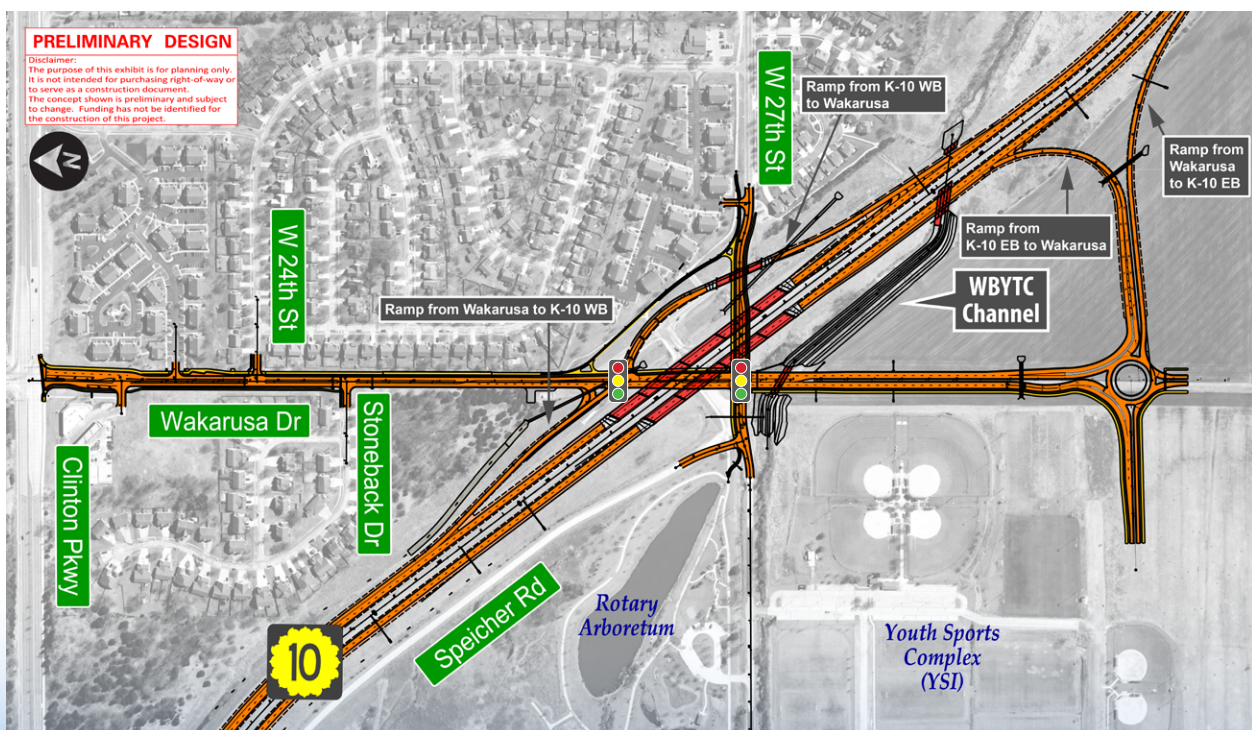
The South Lawrence Trafficway West Leg Expansion is broken down into two, separate projects for construction. They are referred to as the North Project, or 02, and the South Project, 03, which includes the Wakarusa Interchange improvements.

At the end of the project, the SLT West Leg and Wakarusa Interchange will...

- **Widen K-10 to a four lane, median separated highway.** The entire West Leg of the SLT will be widened from two to four lanes. The lanes will be separated by a median. The SLT will be a fully access controlled highway.
- **Improved I-70 and K-10 Interchange.** The system-to-system interchange removes stop signs, toll booths and left turn movements. With this, traffic will flow more freely and safely through the interchange.
- **Add New Interchange at Wakarusa.** The existing intersection will be eliminated and access to Wakarusa and 27th Street will now be through a grade separated interchange, which means K-10 will now go over Wakarusa and 27th Street. Traffic traveling along K-10 will no longer be signal controlled. Access to and from the local streets will be on ramps.
- **Improve U.S. 59 and Clinton Parkway.**
- **Maintain Bob Billings Parkway and 6th Street.**

WAKARUSA INTERCHANGE ALTERNATIVES

The Wakarusa Interchange is a critical improvement to the SLT corridor and transforms the current at-grade intersection to a grade-separated interchange. This design significantly improves safety and traffic flow along this portion of the SLT.



New Alternative

Since meeting with the neighborhoods in 2021, KDOT has refined the Wakarusa Interchange design based on community feedback and is now presenting a preferred alternative, utilizing tight diamond ramps for to and from westbound K-10 and Wakarusa. It keeps the existing Wakarusa access point and fits within the location's constraints. In addition, this concept...

- Connects ramps directly to Wakarusa Drive.
- Provides more conventional access patterns for drivers.
- Provides the best experience and safety for pedestrians and bicyclists.
- Minimizes impacts north of K-10.

What is an at-grade intersection?

An at-grade intersection is where a local road intersects a highway at the same elevation. The vehicle must stop when the other roadway has the right of way. This is the current condition of the intersection at K-10 and Wakarusa.

What is a grade separated interchange?

A grade separated interchange is when a local road crosses over or under the highway and ramps are used to enter or exit the highway. Clinton Parkway or Bob Billings Parkway are examples of grade separated interchanges.

What Happens Now?

The alternative has been shared with city officials, and now shared with the public. KDOT and FHWA are seeking input from the public to finalize the interchange concept to move forward with further design.

COST AND EXPECTED TIMELINE

Construction Cost Details

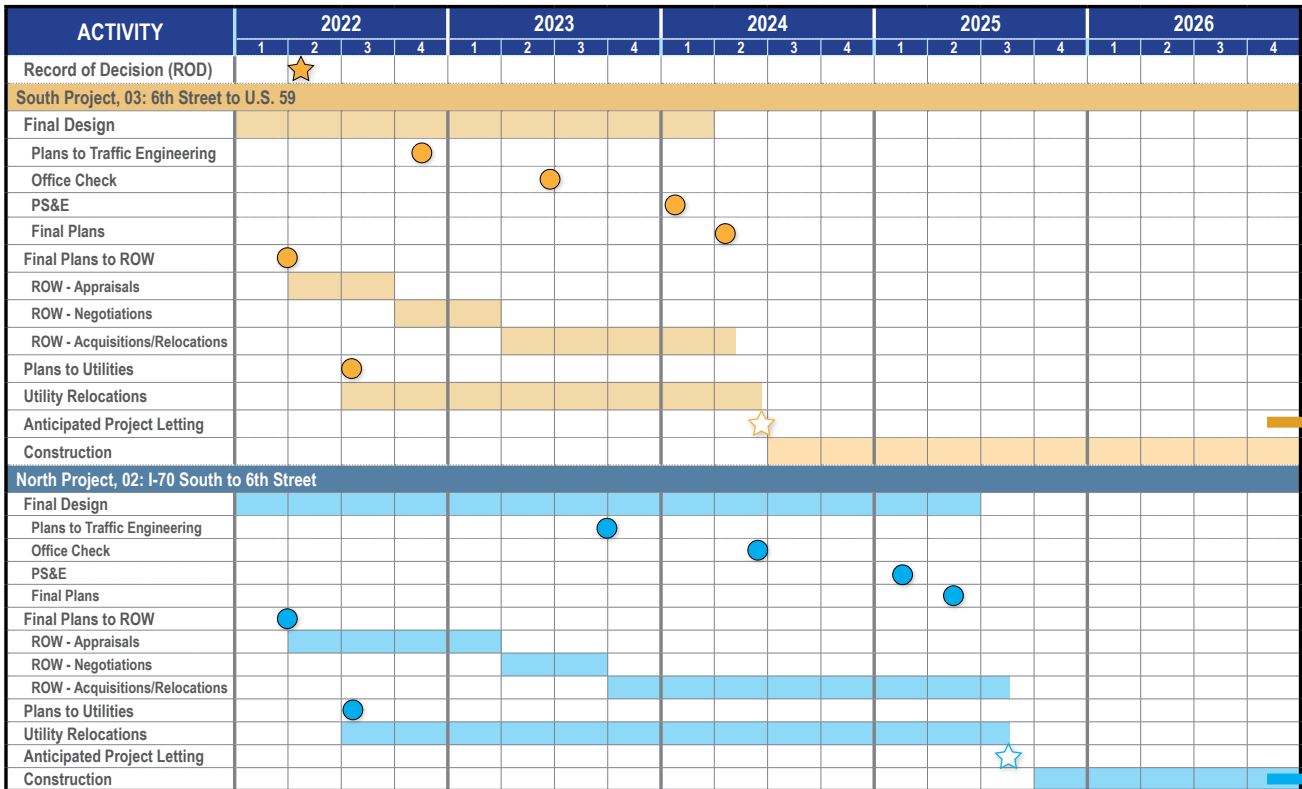
The South Project, 03 (10-23 KA-3634-03): Estimated \$131 million (in 2024 dollars)

The North Project, 02 (10-23 KA-3634-02): Estimated \$84 million (in 2025 dollars)

**Costs include 20% contingency; utilization of KDOT's inflation rates; unit prices adjusted for current market trends.*

Construction Timeline

Beginning with the South Project (03), construction is planned to begin in 2024. Construction on the North Project (02) follows in 2025. The entire project is expected to be completed and opened to traffic in 2028.



Contact

For more information visit the project website at www.slt-ks.org (Click info@slt-ks.org for email)
 Project Contact: Kelly Kultala at (785) 207-0715 or by email kelly.kultala@ks.gov