

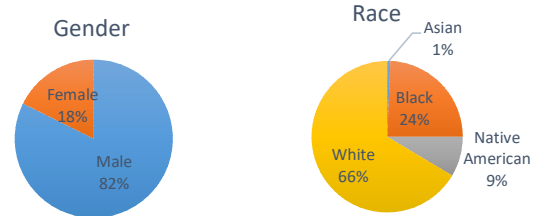
## Douglas County Criminal Justice Statistics - 1/31/25

### Douglas County Correctional Facility (DCCF) - updated each Friday

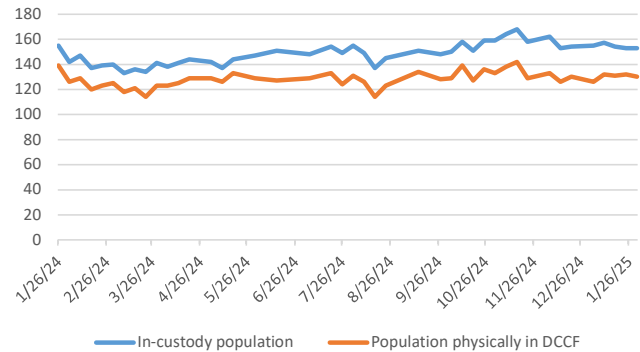
In-custody population	153
<b>In-custody population by gender, race, and ethnicity</b>	
Male	126 82%
Female	27 18%
Asian	1 1%
Black	37 24%
Native American	13 9%
White	101 66%
Hispanic	10 7%
Non-Hispanic	143 93%

<b>In-custody population by county of residence</b>	
Douglas County resident	106 69%
Not Douglas County resident	36 24%
No address (usually homeless in Dg Co)	11 7%

Population housed in other county jails	13
Population at inpatient psychiatric and drug treatment facilities	10
Population physically in DCCF	130
Awaiting Larned/Osawat. bed for competency	10



DCCF Populations



### Criminal Justice Services - updated on the first day of each month

#### Pretrial Release Program

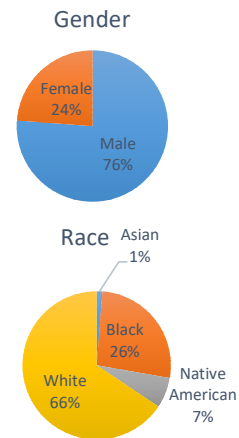
An alternative to incarceration program established in 2017. Information is available at: <https://douglascountyks.org/depts/pretrial/faq>.

Total supervisions since 2017	2,793
Current population	168

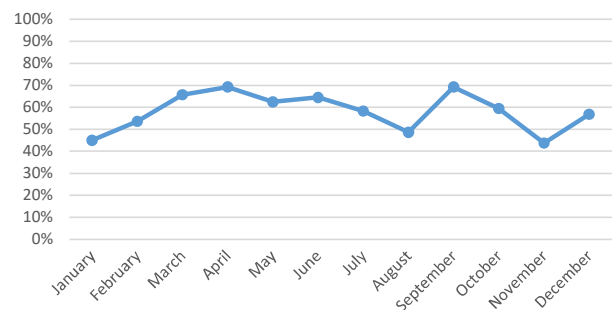
<b>Population by gender, race, and ethnicity</b>	
Male	128 76%
Female	40 24%
Asian	2 1%
Black	44 27%
Native American	11 7%
White	109 66%
Hispanic	18 11%
Non-Hispanic	150 89%

<b>Population by electronic monitoring</b>	
Electronic monitoring	27 16%
No electronic monitoring	141 84%

	December	Last 4 Months
Total seen at in-custody first appearance	65	269
Total eligible for pretrial program	44	165
Total approved for pretrial program	25	97
<i>Percent of eligible approved</i>	57%	59%
Monitoring closed successfully	18	76
New charge (monitoring suspended)	0	0
Failure to appear (monitoring suspended)	8	33
Failure to comply (additional conditions added by the court)	0	2
<i>Percent closed successfully</i>	69%	69%



Percent of Eligible Approved



### House Arrest Program

In operation since October 2017, the house arrest program allows approved individuals to serve a sentence out of custody and within the community. Information is available <http://dgcoks.org/housearrest>.

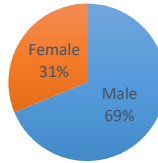
Current population	16
<b>Population by adult status</b>	
Adult	12 75%
Juvenile	4 25%

<b>Population by gender and race</b>	
Male	11 69%
Female	5 31%
<b>Population by race</b>	
Asian	0 0%
Black	4 27%
Native American	2 13%
White	9 60%
Hispanic	1 6%
Non-Hispanic	15 94%

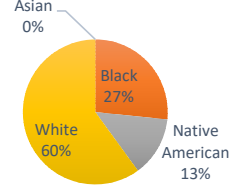
<b>Population by court jurisdiction</b>	
Municipal Court	8 50%
District Court	8 50%

	December	Last 4 Months
Successfully completed	10	31
Closed due to non-compliance	3	4
Total completed	13	35
<i>Percent successfully completed</i>	<i>77%</i>	<i>89%</i>

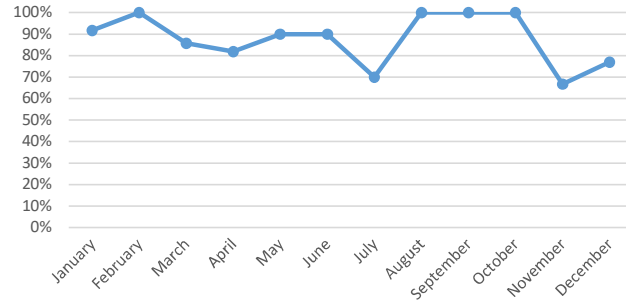
Gender



Race



Percent Successfully Completed



### Behavioral Health Court

A specialty court docket for people with complex behavioral health and substance abuse needs. Established in 2017. Information at: <https://www.dgcoks.gov/behavioral-health-court>.

Current participants	21
<b>Exits since start of program</b>	
Successful graduates	79
Terminations/discharges	46
Voluntary withdrawals and transfers	22
<i>Graduation rate</i>	<i>53%</i>

### Drug Court

Drug Court, established in 2020, seeks to reduce recidivism of individuals with a substance use disorder. Information at: <https://www.dgcoks.gov/drug-court>.

Current participants	15
<b>Exits since start of program</b>	
Successful graduates	30
Terminations	15
Voluntary withdrawals and transfers	6
<i>Graduation rate</i>	<i>59%</i>