

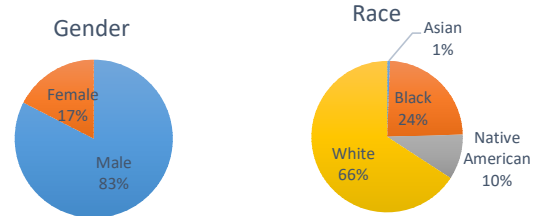
Douglas County Criminal Justice Statistics - 1/3/25

Douglas County Correctional Facility (DCCF) - updated each Friday

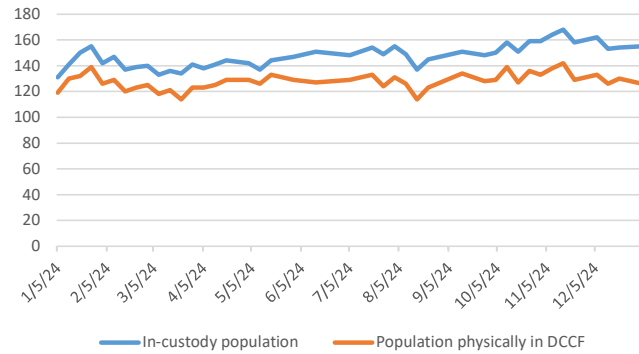
In-custody population	155
In-custody population by gender, race, and ethnicity	
Male	128 83%
Female	27 17%
Asian	1 1%
Black	37 24%
Native American	15 10%
White	102 66%
Hispanic	12 8%
Non-Hispanic	143 92%

In-custody population by county of residence	
Douglas County resident	100 65%
Not Douglas County resident	32 21%
No address (usually homeless in Dg Co)	23 15%

Population housed in other county jails	14
Population at inpatient psychiatric and drug treatment facilities	15
Population physically in DCCF	126
Awaiting Larned/Osawat. bed for competency	7



DCCF Populations



Criminal Justice Services - updated on the first day of each month

Pretrial Release Program

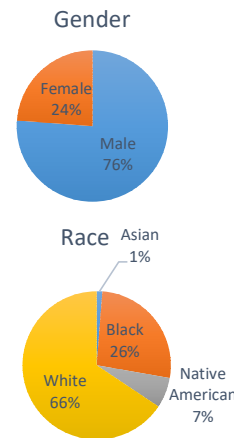
An alternative to incarceration program established in 2017. Information is available at: <https://douglascountyks.org/depts/pretrial/faq>.

Total supervisions since 2017	2,793
Current population	168

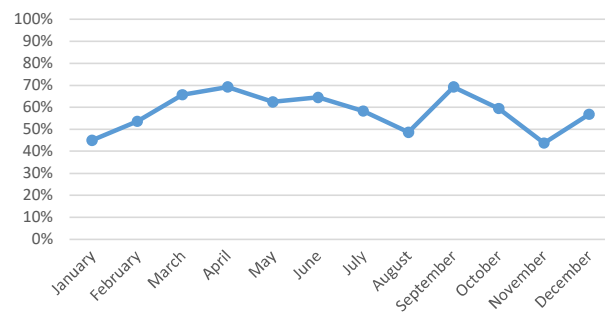
Population by gender, race, and ethnicity	
Male	128 76%
Female	40 24%
Asian	2 1%
Black	44 27%
Native American	11 7%
White	109 66%
Hispanic	18 11%
Non-Hispanic	150 89%

Population by electronic monitoring	
Electronic monitoring	27 16%
No electronic monitoring	141 84%

	December	Last 4 Months
Total seen at in-custody first appearance	65	269
Total eligible for pretrial program	44	165
Total approved for pretrial program	25	97
Percent of eligible approved	57%	59%
Monitoring closed successfully	18	76
New charge (monitoring suspended)	0	0
Failure to appear (monitoring suspended)	8	33
Failure to comply (additional conditions added by the court)	0	2
Percent closed successfully	69%	69%



Percent of Eligible Approved



House Arrest Program

In operation since October 2017, the house arrest program allows approved individuals to serve a sentence out of custody and within the community. Information is available <http://dgcoks.org/housearrest>.

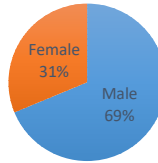
Current population	16
Population by adult status	
Adult	12 75%
Juvenile	4 25%

Population by gender and race	
Male	11 69%
Female	5 31%
Population by race	
Asian	0 0%
Black	4 27%
Native American	2 13%
White	9 60%
Hispanic	1 6%
Non-Hispanic	15 94%

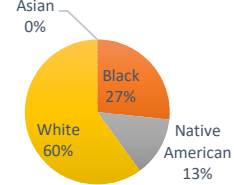
Population by court jurisdiction	
Municipal Court	8 50%
District Court	8 50%

	December	Last 4 Months
Successfully completed	10	31
Closed due to non-compliance	3	4
Total completed	13	35
<i>Percent successfully completed</i>	<i>77%</i>	<i>89%</i>

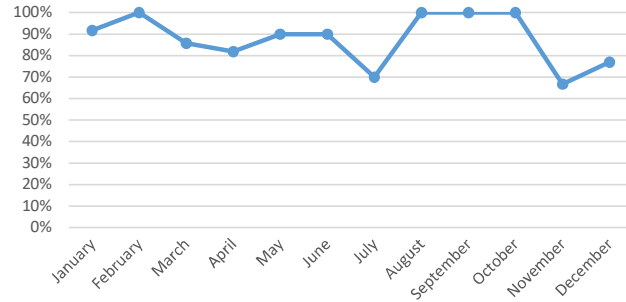
Gender



Race



Percent Successfully Completed



Behavioral Health Court

A specialty court docket for people with complex behavioral health and substance abuse needs. Established in 2017. Information at: <https://www.dgcoks.gov/behavioral-health-court>.

Current participants	21
Exits since start of program	
Successful graduates	79
Terminations/discharges	46
Voluntary withdrawals and transfers	22
<i>Graduation rate</i>	<i>53%</i>

Drug Court

Drug Court, established in 2020, seeks to reduce recidivism of individuals with a substance use disorder. Information at: <https://www.dgcoks.gov/drug-court>.

Current participants	15
Exits since start of program	
Successful graduates	30
Terminations	15
Voluntary withdrawals and transfers	6
<i>Graduation rate</i>	<i>59%</i>