

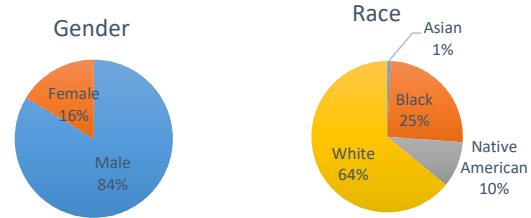
## Douglas County Criminal Justice Statistics - 1/24/25

### Douglas County Correctional Facility (DCCF) - updated each Friday

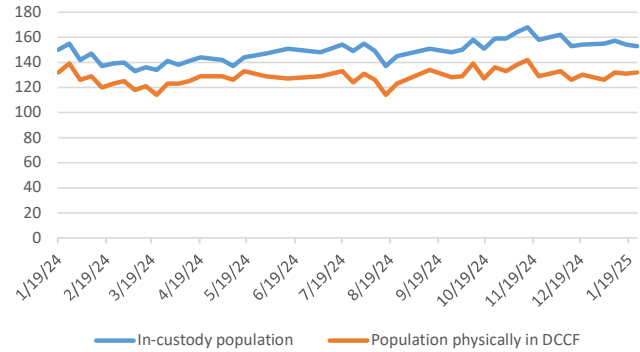
In-custody population	153
<b>In-custody population by gender, race, and ethnicity</b>	
Male	128 84%
Female	25 16%
Asian	1 1%
Black	39 25%
Native American	15 10%
White	98 64%
Hispanic	9 6%
Non-Hispanic	144 94%

<b>In-custody population by county of residence</b>	
Douglas County resident	103 67%
Not Douglas County resident	33 22%
No address (usually homeless in Dg Co)	17 11%

Population housed in other county jails	8
Population at inpatient psychiatric and drug treatment facilities	13
Population physically in DCCF	132
Awaiting Larned/Osawat. bed for competency	9



DCCF Populations



### Criminal Justice Services - updated on the first day of each month

#### Pretrial Release Program

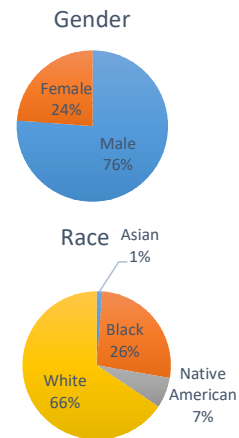
An alternative to incarceration program established in 2017. Information is available at: <https://douglascountyks.org/depts/pretrial/faq>.

Total supervisions since 2017	2,793
Current population	168

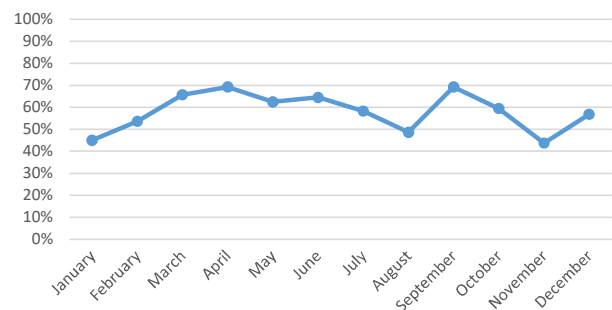
<b>Population by gender, race, and ethnicity</b>	
Male	128 76%
Female	40 24%
Asian	2 1%
Black	44 27%
Native American	11 7%
White	109 66%
Hispanic	18 11%
Non-Hispanic	150 89%

<b>Population by electronic monitoring</b>	
Electronic monitoring	27 16%
No electronic monitoring	141 84%

	December	Last 4 Months
Total seen at in-custody first appearance	65	269
Total eligible for pretrial program	44	165
Total approved for pretrial program	25	97
Percent of eligible approved	57%	59%
Monitoring closed successfully	18	76
New charge (monitoring suspended)	0	0
Failure to appear (monitoring suspended)	8	33
Failure to comply (additional conditions added by the court)	0	2
Percent closed successfully	69%	69%



Percent of Eligible Approved



### House Arrest Program

In operation since October 2017, the house arrest program allows approved individuals to serve a sentence out of custody and within the community. Information is available <http://dgcoks.org/housearrest>.

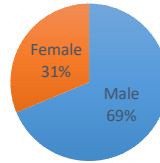
Current population	16
<b>Population by adult status</b>	
Adult	12 75%
Juvenile	4 25%

<b>Population by gender and race</b>	
Male	11 69%
Female	5 31%
Asian	0 0%
Black	4 27%
Native American	2 13%
White	9 60%
Hispanic	1 6%
Non-Hispanic	15 94%

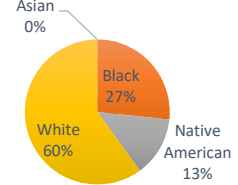
<b>Population by court jurisdiction</b>	
Municipal Court	8 50%
District Court	8 50%

	December	Last 4 Months
Successfully completed	10	31
Closed due to non-compliance	3	4
Total completed	13	35
<i>Percent successfully completed</i>	<i>77%</i>	<i>89%</i>

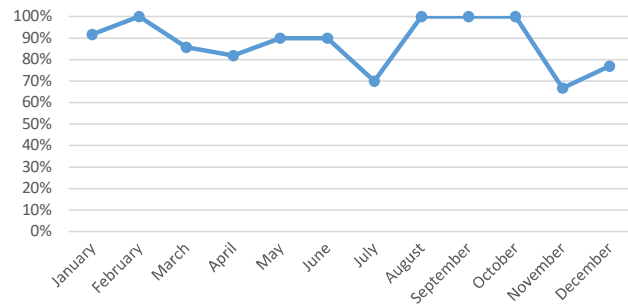
Gender



Race



Percent Successfully Completed



### Behavioral Health Court

A specialty court docket for people with complex behavioral health and substance abuse needs. Established in 2017. Information at: <https://www.dgcoks.gov/behavioral-health-court>.

Current participants	21
<u>Exits since start of program</u>	
Successful graduates	79
Terminations/discharges	46
Voluntary withdrawals and transfers	22
<i>Graduation rate</i>	<i>53%</i>

### Drug Court

Drug Court, established in 2020, seeks to reduce recidivism of individuals with a substance use disorder. Information at: <https://www.dgcoks.gov/drug-court>.

Current participants	15
<u>Exits since start of program</u>	
Successful graduates	30
Terminations	15
Voluntary withdrawals and transfers	6
<i>Graduation rate</i>	<i>59%</i>