

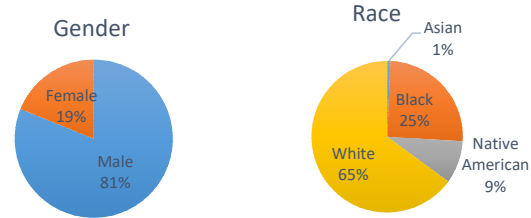
## Douglas County Criminal Justice Statistics - 12/20/24

### Douglas County Correctional Facility (DCCF) - updated each Friday

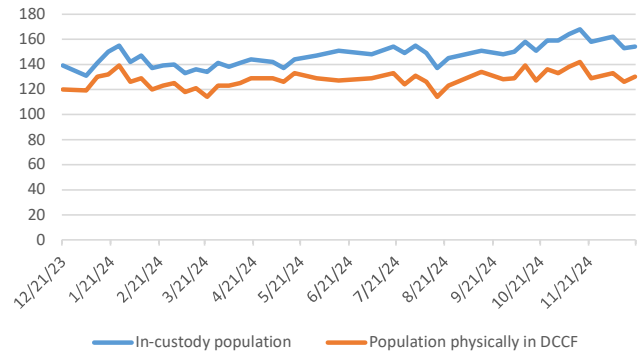
In-custody population	154
<b>In-custody population by gender, race, and ethnicity</b>	
Male	125 81%
Female	29 19%
Asian	1 1%
Black	39 25%
Native American	14 9%
White	100 65%
Hispanic	9 6%
Non-Hispanic	145 94%

<b>In-custody population by county of residence</b>	
Douglas County resident	105 68%
Not Douglas County resident	34 22%
No address (usually homeless in Dg Co)	15 10%

Population housed in other county jails	15
Population at inpatient psychiatric and drug treatment facilities	9
Population physically in DCCF	130
Awaiting Larned/Osawat. bed for competency	7



DCCF Populations



### Criminal Justice Services - updated on the first day of each month

#### Pretrial Release Program

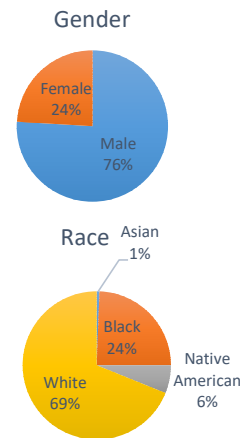
An alternative to incarceration program established in 2017. Information is available at: <https://douglascountyks.org/depts/pretrial/faq>.

Total supervisions since 2017	2,766
Current population	166

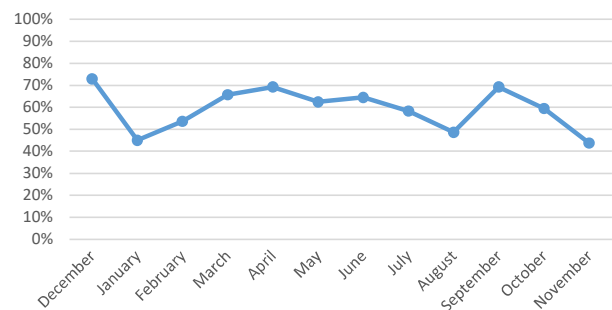
<b>Population by gender, race, and ethnicity</b>	
Male	126 76%
Female	40 24%
Asian	1 1%
Black	40 24%
Native American	10 6%
White	113 69%
Hispanic	17 10%
Non-Hispanic	149 90%

<b>Population by electronic monitoring</b>	
Electronic monitoring	27 16%
No electronic monitoring	139 84%

	November	Last 4 Months
Total seen at in-custody first appearance	56	272
Total eligible for pretrial program	32	158
Total approved for pretrial program	14	90
Percent of eligible approved	44%	57%
Monitoring closed successfully	20	88
New charge (monitoring suspended)	0	1
Failure to appear (monitoring suspended)	6	34
Failure to comply (additional conditions added by the court)	0	4
Percent closed successfully	77%	69%



Percent of Eligible Approved

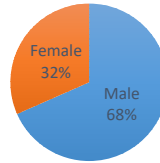


## House Arrest Program

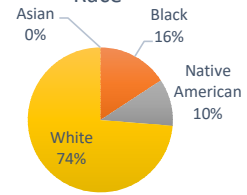
In operation since October 2017, the house arrest program allows approved individuals to serve a sentence out of custody and within the community. Information is available <http://dgcoks.org/housearrest>.

Current population	19	
<b>Population by adult status</b>		
Adult	17 89%	
Juvenile	2 11%	
<b>Population by gender and race</b>		
Male	13 68%	
Female	6 32%	
Asian	0 0%	
Black	3 16%	
Native American	2 11%	
White	14 74%	
Hispanic	3 16%	
Non-Hispanic	16 84%	
<b>Population by court jurisdiction</b>		
Municipal Court	11 58%	
District Court	8 42%	
	<b>November</b>	<b>Last 4 Months</b>
Successfully completed	2	25
Closed due to non-compliance	1	1
Total completed	3	26
<i>Percent successfully completed</i>	<i>67%</i>	<i>96%</i>

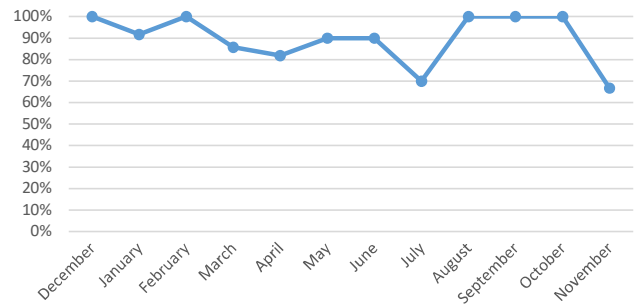
Gender



Race



Percent Successfully Completed



## Behavioral Health Court

A specialty court docket for people with complex behavioral health and substance abuse needs. Established in 2017. Information at: <https://www.dgcoks.gov/behavioral-health-court>.

Current participants	21
<b>Exits since start of program</b>	
Successful graduates	78
Terminations/discharges	45
Voluntary withdrawals and transfers	21
<i>Graduation rate</i>	<i>54%</i>

## Drug Court

Drug Court, established in 2020, seeks to reduce recidivism of individuals with a substance use disorder. Information at: <https://www.dgcoks.gov/drug-court>.

Current participants	15
<b>Exits since start of program</b>	
Successful graduates	28
Terminations	14
Voluntary withdrawals and transfers	6
<i>Graduation rate</i>	<i>58%</i>