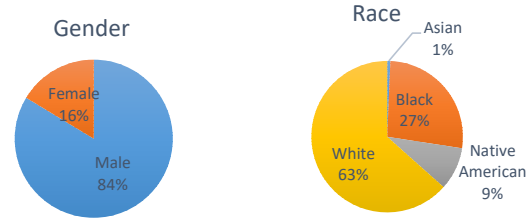


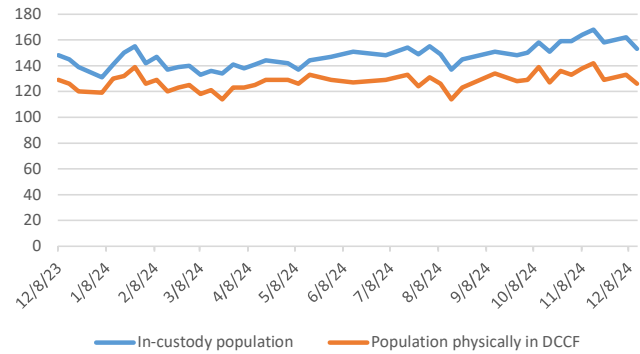
Douglas County Criminal Justice Statistics - 12/13/24

Douglas County Correctional Facility (DCCF) - updated each Friday

In-custody population	153
In-custody population by gender, race, and ethnicity	
Male	128 84%
Female	25 16%
Asian	1 1%
Black	41 27%
Native American	14 9%
White	97 63%
Hispanic	10 7%
Non-Hispanic	143 93%
In-custody population by county of residence	
Douglas County resident	107 70%
Not Douglas County resident	31 20%
No address (usually homeless in Dg Co)	15 10%
Population housed in other county jails	
Population at inpatient psychiatric and drug treatment facilities	14
Population physically in DCCF	126
Awaiting Larned/Osawat. bed for competency	8



DCCF Populations



Criminal Justice Services - updated on the first day of each month

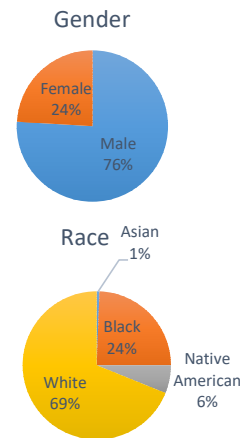
Pretrial Release Program

An alternative to incarceration program established in 2017. Information is available at: <https://douglascountyks.org/depts/pretrial/faq>.

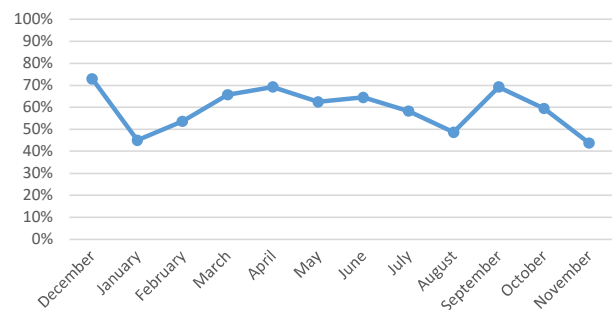
Total supervisions since 2017	2,766
Current population	166
Population by gender, race, and ethnicity	
Male	126 76%
Female	40 24%
Asian	1 1%
Black	40 24%
Native American	10 6%
White	113 69%
Hispanic	17 10%
Non-Hispanic	149 90%

Population by electronic monitoring	
Electronic monitoring	27 16%
No electronic monitoring	139 84%

	November	Last 4 Months
Total seen at in-custody first appearance	56	272
Total eligible for pretrial program	32	158
Total approved for pretrial program	14	90
Percent of eligible approved	44%	57%
Monitoring closed successfully	20	88
New charge (monitoring suspended)	0	1
Failure to appear (monitoring suspended)	6	34
Failure to comply (additional conditions added by the court)	0	4
Percent closed successfully	77%	69%



Percent of Eligible Approved

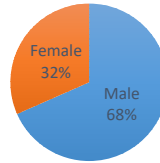


House Arrest Program

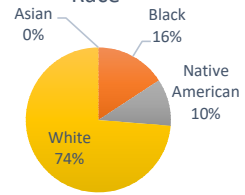
In operation since October 2017, the house arrest program allows approved individuals to serve a sentence out of custody and within the community. Information is available <http://dgcoks.org/housearrest>.

Current population	19	
Population by adult status		
Adult	17	89%
Juvenile	2	11%
Population by gender and race		
Male	13	68%
Female	6	32%
Asian	0	0%
Black	3	16%
Native American	2	11%
White	14	74%
Hispanic	3	16%
Non-Hispanic	16	84%
Population by court jurisdiction		
Municipal Court	11	58%
District Court	8	42%
	<u>November</u>	<u>Last 4 Months</u>
Successfully completed	2	25
Closed due to non-compliance	1	1
Total completed	3	26
<i>Percent successfully completed</i>	<i>67%</i>	<i>96%</i>

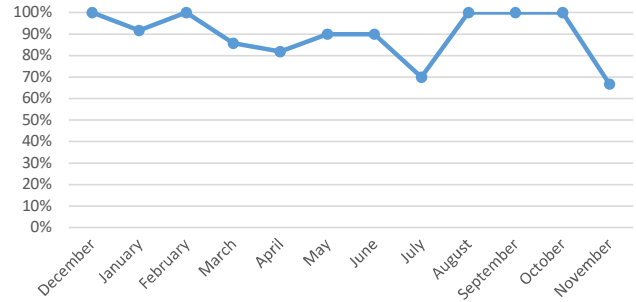
Gender



Race



Percent Successfully Completed



Behavioral Health Court

A specialty court docket for people with complex behavioral health and substance abuse needs. Established in 2017. Information at: <https://www.dgcoks.gov/behavioral-health-court>.

Current participants	21
<u>Exits since start of program</u>	
Successful graduates	78
Terminations/discharges	45
Voluntary withdrawals and transfers	21
<i>Graduation rate</i>	<i>54%</i>

Drug Court

Drug Court, established in 2020, seeks to reduce recidivism of individuals with a substance use disorder. Information at: <https://www.dgcoks.gov/drug-court>.

Current participants	15
<u>Exits since start of program</u>	
Successful graduates	28
Terminations	14
Voluntary withdrawals and transfers	6
<i>Graduation rate</i>	<i>58%</i>