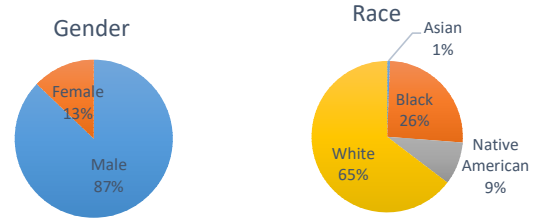


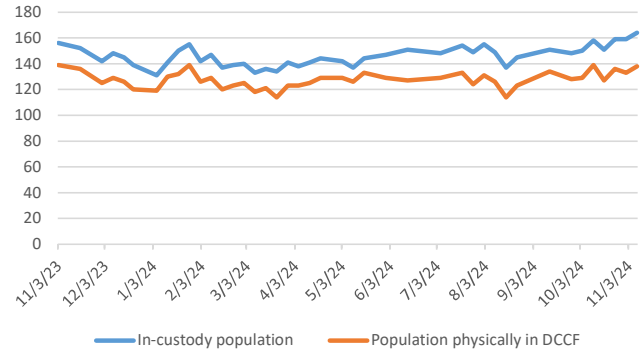
## Douglas County Criminal Justice Statistics - 11/8/24

### Douglas County Correctional Facility (DCCF) - updated each Friday

In-custody population	164
<b>In-custody population by gender, race, and ethnicity</b>	
Male	143 87%
Female	21 13%
Asian	1 1%
Black	42 26%
Native American	15 9%
White	106 65%
Hispanic	10 6%
Non-Hispanic	154 94%
<b>In-custody population by county of residence</b>	
Douglas County resident	106 65%
Not Douglas County resident	34 21%
No address (usually homeless in Dg Co)	24 15%
<b>Population housed in other county jails</b>	
Population at inpatient psychiatric and drug treatment facilities	13
Population physically in DCCF	138
Awaiting Larned/Osawat. bed for competency	5



DCCF Populations



### Criminal Justice Services - updated on the first day of each month

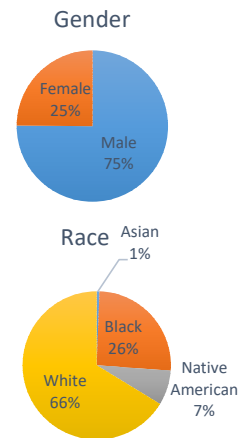
#### Pretrial Release Program

An alternative to incarceration program established in 2017. Information is available at: <https://douglascountyks.org/depts/pretrial/faq>.

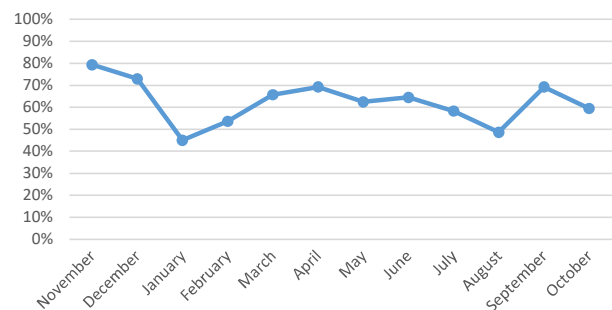
Total supervisions since 2017	2,742
Current population	173
<b>Population by gender, race, and ethnicity</b>	
Male	130 75%
Female	43 25%
Asian	1 1%
Black	44 26%
Native American	13 8%
White	114 66%
Hispanic	16 9%
Non-Hispanic	157 91%

<b>Population by electronic monitoring</b>	
Electronic monitoring	30 17%
No electronic monitoring	143 83%

	October	Last 4 Months
Total seen at in-custody first appearance	61	265
Total eligible for pretrial program	37	162
Total approved for pretrial program	22	97
Percent of eligible approved	59%	60%
<b>Monitoring closed successfully</b>		
Monitoring closed successfully	16	79
New charge (monitoring suspended)	0	1
Failure to appear (monitoring suspended)	9	33
Failure to comply (additional conditions added by the court)	0	4
Percent closed successfully	64%	68%



Percent of Eligible Approved

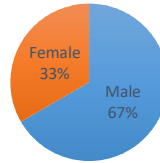


### House Arrest Program

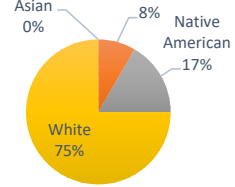
In operation since October 2017, the house arrest program allows approved individuals to serve a sentence out of custody and within the community. Information is available <http://dgcoks.org/housearrest>.

Current population	12	
<b>Population by adult status</b>		
Adult	10 83%	
Juvenile	2 17%	
<b>Population by gender and race</b>		
Male	8 67%	
Female	4 33%	
Asian	0 0%	
Black	1 8%	
Native American	2 17%	
White	9 75%	
Hispanic	1 9%	
Non-Hispanic	10 91%	
<b>Population by court jurisdiction</b>		
Municipal Court	7 58%	
District Court	5 42%	
	<b>October</b>	<b>Last 4 Months</b>
Successfully completed	7	29
Closed due to non-compliance	0	4
Total completed	7	33
Percent successfully completed	100%	88%

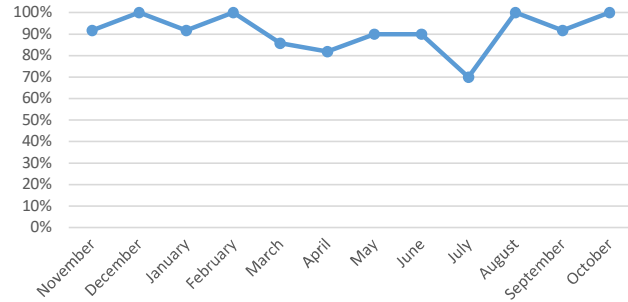
Gender



Race



Percent Successfully Completed



### Behavioral Health Court

A specialty court docket for people with complex behavioral health and substance abuse needs. Established in 2017. Information at: <https://www.dgcoks.gov/behavioral-health-court>.

Current participants	20
<u>Exits since start of program</u>	
Successful graduates	77
Terminations/discharges	42
Voluntary withdrawals and transfers	21
Graduation rate	55%

### Drug Court

Drug Court, established in 2020, seeks to reduce recidivism of individuals with a substance use disorder. Information at: <https://www.dgcoks.gov/drug-court>.

Current participants	17
<u>Exits since start of program</u>	
Successful graduates	28
Terminations	13
Voluntary withdrawals and transfers	6
Graduation rate	60%