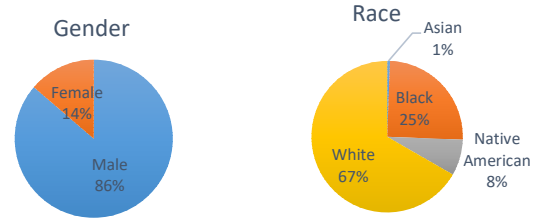


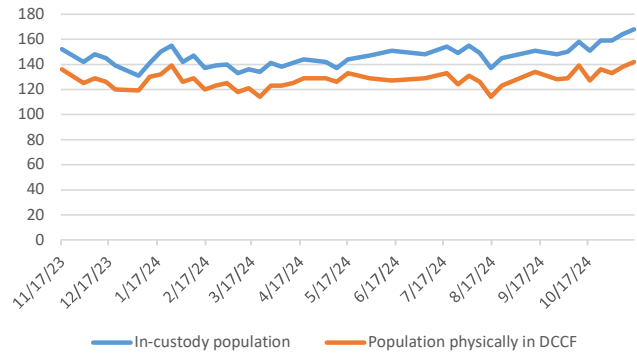
Douglas County Criminal Justice Statistics - 11/15/24

Douglas County Correctional Facility (DCCF) - updated each Friday

In-custody population	168
In-custody population by gender, race, and ethnicity	
Male	145 86%
Female	23 14%
Asian	1 1%
Black	42 25%
Native American	13 8%
White	112 67%
Hispanic	10 6%
Non-Hispanic	158 94%
In-custody population by county of residence	
Douglas County resident	115 68%
Not Douglas County resident	31 18%
No address (usually homeless in Dg Co)	22 13%
Population housed in other county jails	
Population at inpatient psychiatric and drug treatment facilities	14
Population physically in DCCF	142
Awaiting Larned/Osawat. bed for competency	5



DCCF Populations



Criminal Justice Services - updated on the first day of each month

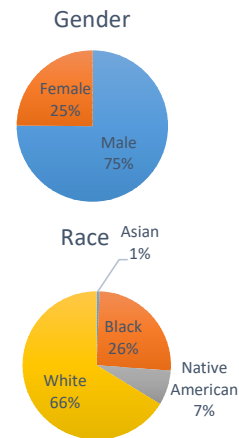
Pretrial Release Program

An alternative to incarceration program established in 2017. Information is available at: <https://douglascountyks.org/depts/pretrial/faq>.

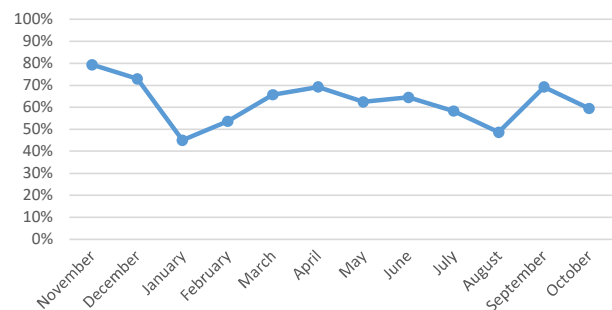
Total supervisions since 2017	2,742
Current population	173
Population by gender, race, and ethnicity	
Male	130 75%
Female	43 25%
Asian	1 1%
Black	44 26%
Native American	13 8%
White	114 66%
Hispanic	16 9%
Non-Hispanic	157 91%

Population by electronic monitoring	
Electronic monitoring	30 17%
No electronic monitoring	143 83%

	October	Last 4 Months
Total seen at in-custody first appearance	61	265
Total eligible for pretrial program	37	162
Total approved for pretrial program	22	97
Percent of eligible approved	59%	60%
Monitoring closed successfully		
Monitoring closed successfully	16	79
New charge (monitoring suspended)	0	1
Failure to appear (monitoring suspended)	9	33
Failure to comply (additional conditions added by the court)	0	4
Percent closed successfully	64%	68%



Percent of Eligible Approved

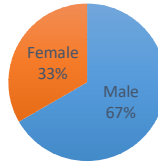


House Arrest Program

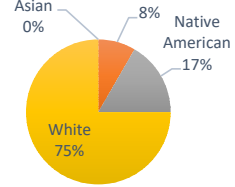
In operation since October 2017, the house arrest program allows approved individuals to serve a sentence out of custody and within the community. Information is available <http://dgcoks.org/housearrest>.

Current population	12	
Population by adult status		
Adult	10	83%
Juvenile	2	17%
Population by gender and race		
Male	8	67%
Female	4	33%
Asian	0	0%
Black	1	8%
Native American	2	17%
White	9	75%
Hispanic	1	9%
Non-Hispanic	10	91%
Population by court jurisdiction		
Municipal Court	7	58%
District Court	5	42%
	<u>October</u>	<u>Last 4 Months</u>
Successfully completed	7	29
Closed due to non-compliance	0	4
Total completed	7	33
<i>Percent successfully completed</i>	<i>100%</i>	<i>88%</i>

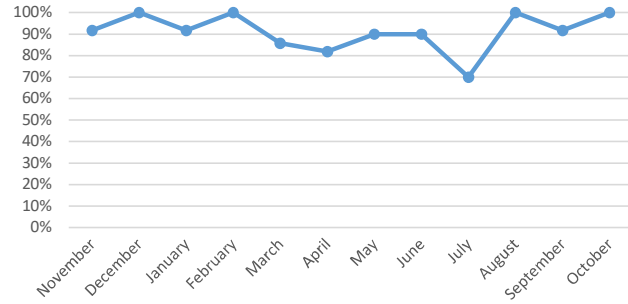
Gender



Race



Percent Successfully Completed



Behavioral Health Court

A specialty court docket for people with complex behavioral health and substance abuse needs. Established in 2017. Information at: <https://www.dgcoks.gov/behavioral-health-court>.

Current participants	20
<u>Exits since start of program</u>	
Successful graduates	77
Terminations/discharges	42
Voluntary withdrawals and transfers	21
<i>Graduation rate</i>	<i>55%</i>

Drug Court

Drug Court, established in 2020, seeks to reduce recidivism of individuals with a substance use disorder. Information at: <https://www.dgcoks.gov/drug-court>.

Current participants	17
<u>Exits since start of program</u>	
Successful graduates	28
Terminations	13
Voluntary withdrawals and transfers	6
<i>Graduation rate</i>	<i>60%</i>