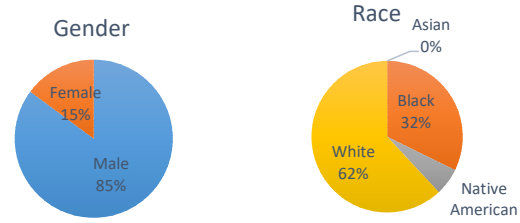


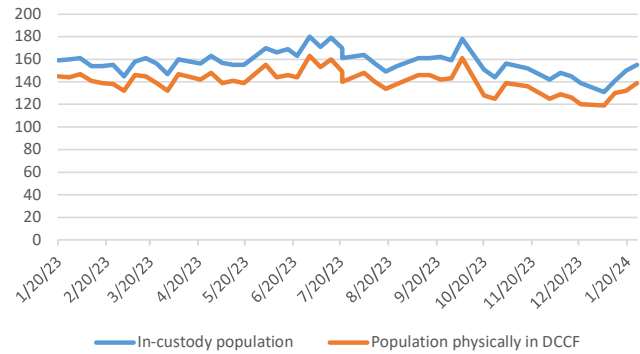
Douglas County Criminal Justice Statistics - 1/26/24

Douglas County Correctional Facility (DCCF) - updated each Friday

In-custody population	155
In-custody population by gender, race, and ethnicity	
Male	132 85%
Female	23 15%
Asian	0 0%
Black	50 32%
Native American	9 6%
White	96 62%
Hispanic	9 6%
Non-Hispanic	146 94%
In-custody population by county of residence	
Douglas County resident	114 74%
Not Douglas County resident	37 24%
No address (usually homeless in Dg Co)	4 3%
Population housed in other county jails	
Population at inpatient psychiatric and drug treatment facilities	12
Population physically in DCCF	139
Awaiting Larned/Osawat. bed for competency	5



DCCF Populations



Criminal Justice Services - updated on the first day of each month

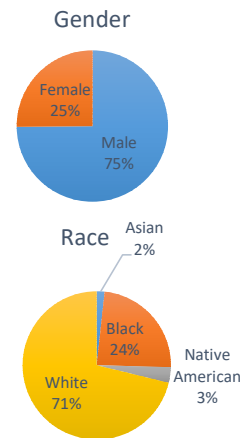
Pretrial Release Program

An alternative to incarceration program established in 2017. Information is available at: <https://douglascountyks.org/depts/pretrial/faq>.

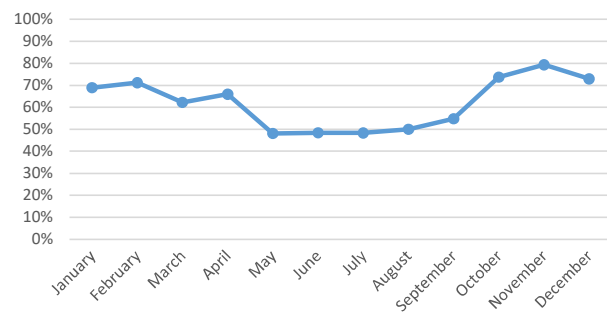
Total supervisions since 2017	2,451
Current population	179
Population by gender, race, and ethnicity	
Male	134 75%
Female	45 25%
Asian	3 2%
Black	42 24%
Native American	6 3%
White	126 71%
Hispanic	15 8%
Non-Hispanic	164 92%

Population by electronic monitoring	
Electronic monitoring	31 17%
No electronic monitoring	148 83%

	December	Last 4 Months
Total seen at in-custody first appearance	47	205
Total eligible for pretrial program	37	146
Total approved for pretrial program	27	101
Percent of eligible approved	73%	69%
Monitoring closed successfully	13	89
New charge (monitoring suspended)	0	0
Failure to appear (monitoring suspended)	9	30
Failure to comply (additional conditions added by the court)	1	3
Percent closed successfully	57%	73%



Percent of Eligible Approved

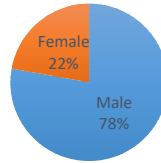


House Arrest Program

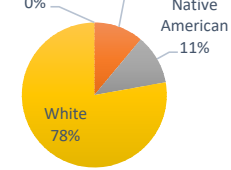
In operation since October 2017, the house arrest program allows approved individuals to serve a sentence out of custody and within the community. Information is available <http://dgcoks.org/housearrest>.

Current population	18	
Population by adult status		
Adult	18	100%
Juvenile	0	0%
Population by gender and race		
Male	14	78%
Female	4	22%
Asian	0	0%
Black	2	11%
Native American	2	11%
White	14	78%
Hispanic	3	17%
Non-Hispanic	15	83%
Population by court jurisdiction		
Municipal Court	5	28%
District Court	13	72%
	<u>December</u>	<u>Last 4 Months</u>
Successfully completed	11	43
Closed due to non-compliance	0	3
Total completed	11	46
<i>Percent successfully completed</i>	<i>100%</i>	<i>93%</i>

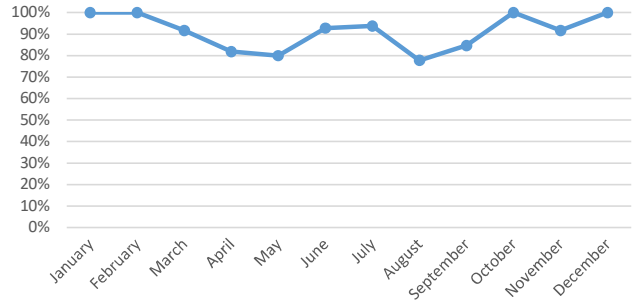
Gender



Race



Percent Successfully Completed



Behavioral Health Court

A specialty court docket for people with complex behavioral health and substance abuse needs. Established in 2017. Information at: <http://dgcoks.org/bhcourt>.

Current participants	20
<u>Exits since start of program</u>	
Successful graduates	65
Terminations/discharges	36
Voluntary withdrawals and transfers	20
<i>Graduation rate</i>	<i>53%</i>

Drug Court

Drug Court, established in 2020, seeks to reduce recidivism of individuals with a substance use disorder. Information at: <https://www.douglascountyks.org/depts/district-attorney/douglas-county-drug-court-information>

Current participants	18
<u>Exits since start of program</u>	
Successful graduates	18
Terminations	10
Voluntary withdrawals and transfers	5
<i>Graduation rate</i>	<i>55%</i>